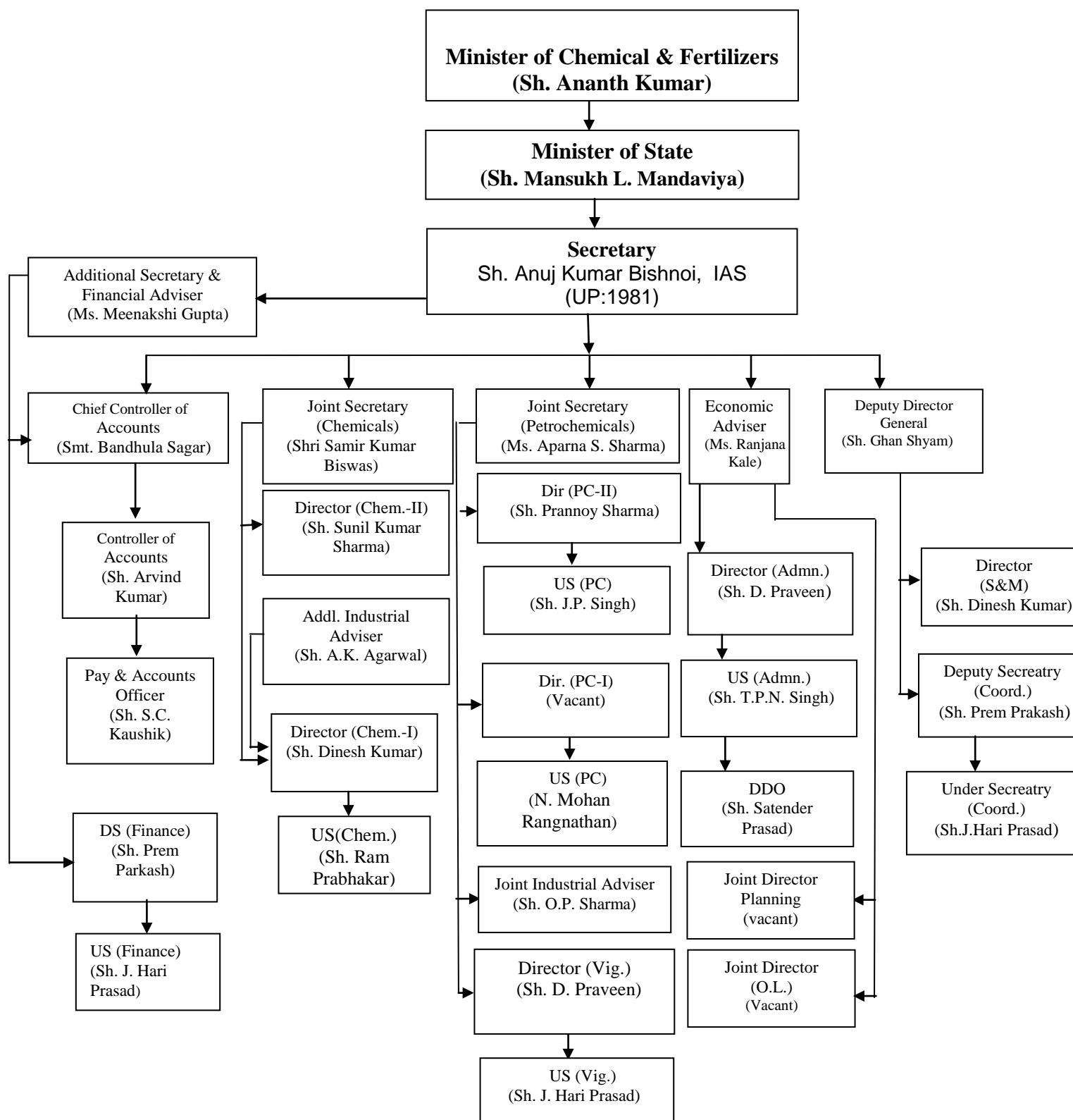


Annexure III

**ORGANISATIONAL CHART OF DEPARTMENT OF CHEMICALS
& PETROCHEMICALS (As on 27.03.2017)**



Chem: Chemicals
 PC: Petrochemicals
 Vig: Vigilance
 O.L: Official Language
 Coord : Coordination
 S&M : Statistics & monitoring